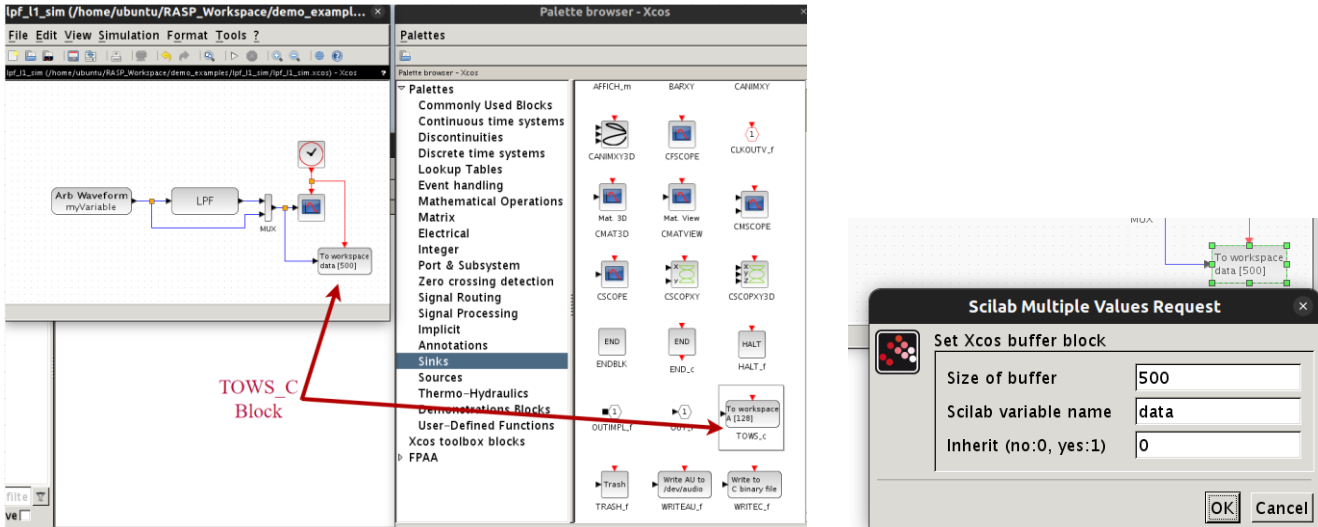


# Extracting Data from Scilab Simulation

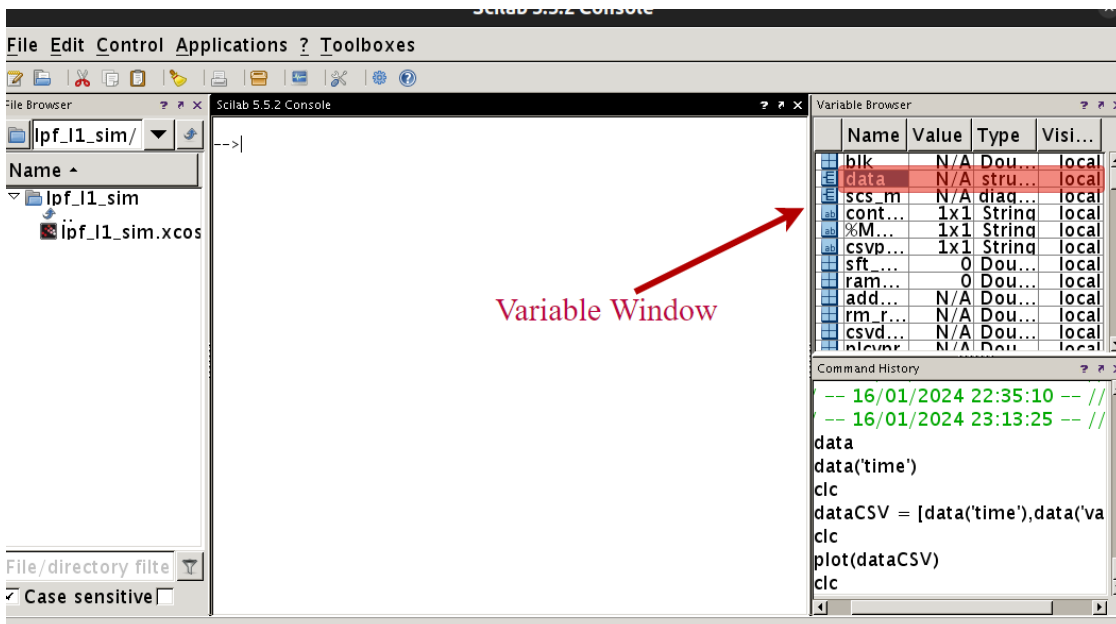
The “TOWS\_c” block can take outputs of a scilab simulation and put them into a data structure in the scilab workspace (a variable).



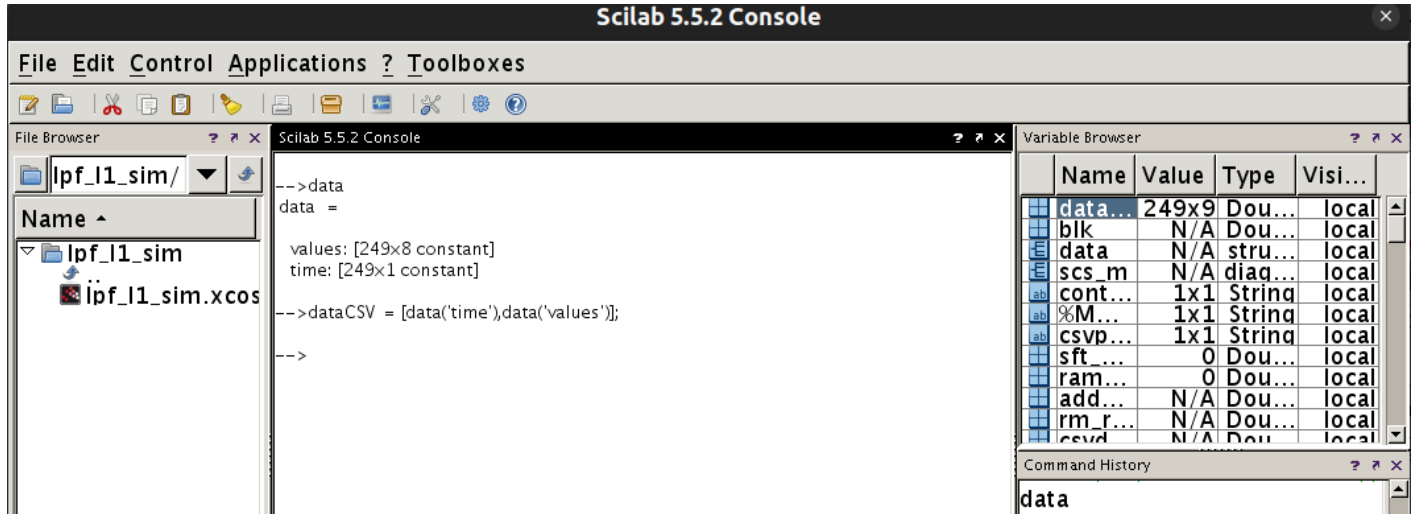
Connect the red part of the block to your red (time) line and the other end to the output you want to save (same as the connections for your figure block).

The TOWS\_c blocks options open when double clicked. The “Size of Buffer” is the maximum amount of data points that will be saved: size this at or larger to the total number of points your simulation generates. “Scilab variable name” specifies under what name the data will be saved in the main Scilab window. The last option can be kept at 0 for no inherit.

Once a simulation is played, the data is saved into the specified variable which can be accessed through the variable window.



The data structure that Scilab saves the data into is a dictionary. To extract this into a usable form use the key pair to copy the data into another variable.



You can double-click the new variable in the variable browser and then export the raw data values to a csv file, which you can then pull into Matlab/Python and plot.

